

UNIFORM REGULATIONS (NROTC)

- I. **NWU TYPE III**
- II. **MARPATS (MARINE OPTION ONLY)**
- III. **SERVICE DRESS BLUES (SDB)**
- IV. **SERVICE KHAKIS**
- V. **SUMMER WHITES**
- VI. **PHYSICAL TRAINING GEAR (PT GEAR)**
- VII. **PERSONAL APPEARANCE**

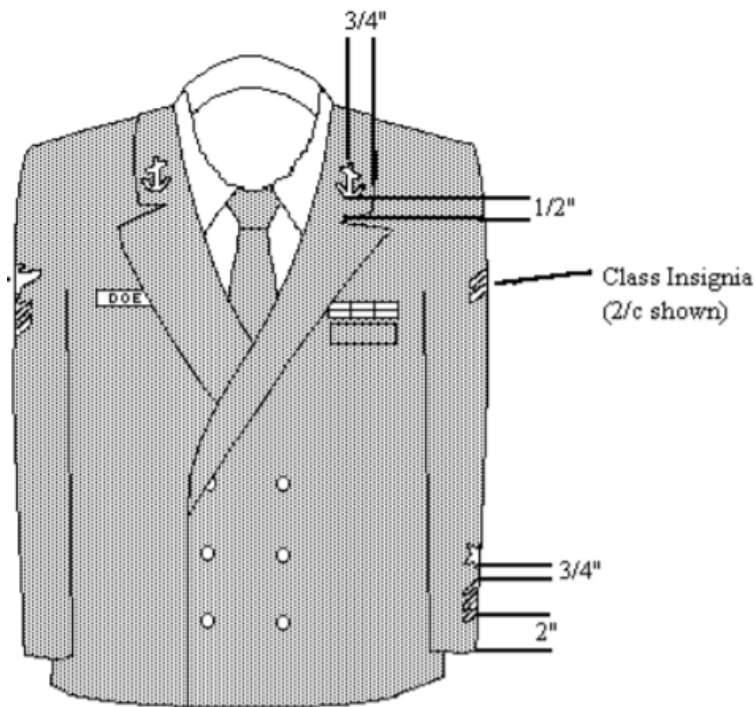
I. **NWU TYPE III**

- A. *Shirt* - Wear squarely on shoulders and outside the waistband of the NWU trousers. Length should fall between the bottom of the crotch and no further than the middle of the trouser cargo pocket flap. All closures will be secured with sewn buttons/holes. Sleeves will be fully extended and fastened at the cuff using either of the two buttons located close together on the sleeve to present a fitted appearance. Sleeves will cover the wrist bone but will not extend beyond the first knuckle at the base of the thumb.
- B. *Trousers* - Wear fastened fully on the waist with belt buckle centered over the trouser fastener. Each trouser leg will be bloused using blousing straps and will cover the top three rows of the boot eyelets.
- C. *Eight-point Cap* - The cap will be worn squarely on the head so that the visor is straight, just above the level of the eyes and parallel with the deck.
- D. *Boots* - Smooth leather (8-inch or 9-inch) boots will be blackened and buffed. The optional 9-inch rough-side-out leather safety boot will not require polishing but must be cleaned and maintained to present a well-kept manner. Lace shoes from inside out through all eyelids and tie. Bootlaces will be tucked in a manner to present a well-kept appearance.
- E. *Undershirt* - Coyote brown. Wear right side out, front of shirt to front of body. When worn with uniform trousers, the t-shirt will remain tucked in.
- F. *Belt* - Wear the belt through all loops with the clip to the left of the buckle.
- G. *Buckle* - Wear the buckle so that the belt clip end touches the LEFT side of the buckle. Align the right side of the buckle with the opening of the fly, forming a straight line.
- H. *Blousing Straps* - Place blousing strap three eyelets down from top of the boot and fasten to boot. Tuck pant leg up under the strap to present a neat tucked in appearance.

III. SERVICE DRESS BLUES (SDBS)

1. MALE

- A. *Trousers*: The hem of the trousers will fall 1/4" above the heel welt and shall cover the upper part of the shoe by approximately one inch.
- B. *Tie*: Neckties will be tied with a double Windsor knot. Tie clasps are worn one inch down from the center of the tie, parallel to the deck. The bottom of the tie will be within one inch above but not touching the belt buckle.
- C. *Belt*: For Navy options, the belt is worn with the polished end of the belt tip flush with the buckle. The open side of the buckle will be aligned with the gig line, so that the open end of the shirt, the open end of the buckle, and the overlap of the fly of the trousers all make a continuous straight line. For Marine options, the belt is worn with the belt tip extending 2 to 4 inches beyond the buckle. The buckle edge is also aligned with the gig line. For both options, all quartermaster must be removed from the buckle and tip, and they must always be shined and free of dirt and excess polish.
- D. *Covers*: The combination cap is worn squarely on the head, the bottom edge horizontal approximately 1½" above the eyebrows. The cover will always be clean and free of dirt or dust.
- E. *Shoes*: All parts of the shoes will be shined to a high gloss and the edges of the soles will be cleaned and edge-dressed.
- F. *Ribbons and Nametag*: Ribbons shall be worn in the order of descending precedence inboard to outboard, top to bottom. The bottom bar will be worn 1/4" (1/8" for Marine Options) and centered above the left breast pocket, parallel to the deck. All rows shall have the same number of ribbons except for the top row, which will be centered on the other rows as necessary. The nametag will be centered on the right breast with its bottom edge exactly parallel to the bottom bar of ribbons.
- G. *Sleeve Class Insignia*: Sleeve class insignia shall consist of the horizontal stripes worn on the left sleeve of the service dress blue (SDB) uniform, centered between the shoulder and the elbow.
- H. *Collar Insignia*: Blouse collar insignia shall consist of plain gold anchors indicating midshipman status. It shall be pinned to the blouse collar so that the crown of the anchor is 1/2" above the notch of the lapels, 1" from the bottom line of the shank, parallel to the 3/4" from the outer edge of the collar (see illustration). The lower end of the stock shall be outboard and the stock should be approximately horizontal.



2. **FEMALE**

- A. *Skirt*: Length may range from 1-1/2 inches above to 1-1/2 inches below the crease behind the knee.
- B. *Heels*: Heels shall be no higher than approximately 2-5/8 inches nor less than approximately 5/8 inch measured from the forward edge, and no wider than approximately 1-3/4 inches at the base. Sole shall be no thicker than approximately 1/4 inch.
- C. *Trousers*: Trousers shall hang approximately 2 inches from the floor at the back of the shoe.
- D. *Rank Insignia*: **CLASS**: Centered midway between shoulder and elbow; **MIDN OFFICER**: centered on the outer side of the sleeve with lower stripe 2 inches above and parallel to the edge of the cuff; one ray of the star points down, and the point is 3/4 inch above the upper stripe.
- E. *Coat*:
 1. **ANCHORS**: 1 inch from the bottom and midway between the two sides (females), and the centerline of the shank is parallel to and approximately 3/4 inch from the collar's outer edge. The lower end of the stock is outboard and the stock approximately horizontal.
 2. **NAMETAG**: Center nametags 1/4 inch above the right breast pocket

3. **RIBBONS:** Centered 1/4 inch above the left breast pocket and parallel to the deck.

VII. PERSONAL APPEARANCE

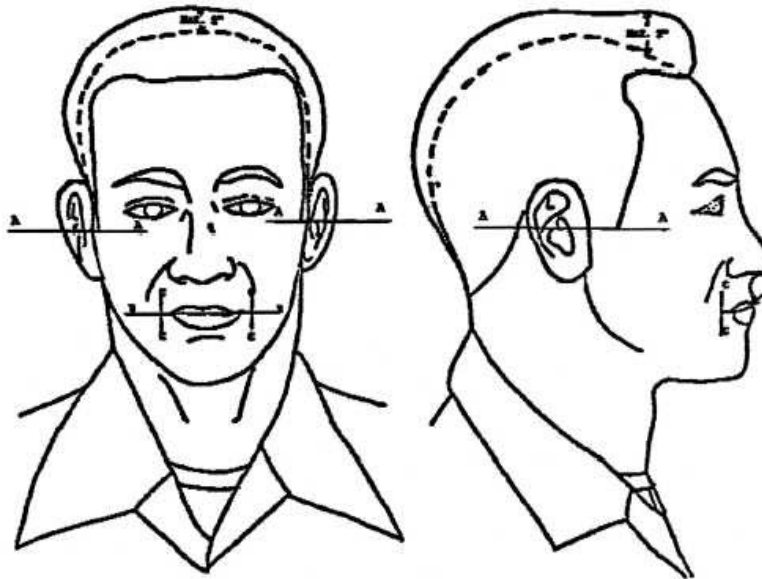
1. MALES

- A. HAIR.** Keep hair neat, clean and well groomed. Hair above the ears and around the neck shall be tapered from the lower natural hairline upwards at least 3/4 inch and outward not greater than 3/4 inch to blend with hairstyle. Hair on the back of the neck must not touch the collar. Hair shall be no longer than four inches and may not touch the ears, collar, extend below eyebrows when headgear is removed, show under front edge of headgear, or interfere with properly wearing military headgear. The bulk of the hair shall not exceed approximately two inches. Bulk is defined as the distance that the mass of hair protrudes from the scalp. Hair coloring must look natural and complement the individual. Faddish styles and outrageous multicolored hair are not authorized. The unique quality and texture of curled, waved, and straight hair are recognized, and in some cases the 3/4 inch taper at the back of the neck may be difficult to attain. In those cases hair must present a graduated appearance and may combine the taper with a line at the back of the neck. **One** (cut, clipped or shaved) natural, narrow, fore and aft part is authorized. Varying hairstyles, including afro, are permitted if these styles meet the criteria of maximum length and bulk, tapered neck and sides, and do not interfere with properly wearing military headgear. Plaited or braided hair shall not be worn while in uniform or in a duty status. Keep sideburns neatly trimmed and tailored in the same manner as the haircut. Sideburns shall not extend below a point level with the middle of the ear, shall be of even width (not flared) and shall end with a clean shaven horizontal line.
- B. SHAVING AND MUSTACHES.** The face shall be clean shaven unless a shaving waiver is authorized by the Commanding Officer or a religious accommodation has been granted. Mustaches are authorized but shall be kept neatly and closely trimmed. No portion of the mustache shall extend below the lip line of the

upper lip. It shall not go beyond a horizontal line extending across the corners of the mouth and no more than 1/4 inch beyond a vertical line drawn from the corner of the mouth. The length of an individual mustache hair fully extended shall not exceed approximately 1/2 inch. Handlebar mustaches, goatees, beards or eccentricities are not permitted.

GROOMING STANDARDS FOR MEN

Figure 2-2-1



- C. FINGERNAILS.** Fingernails shall not extend past fingertips. They shall be kept clean. The tips of the nails may be round to align with the contour of the fingertip. Buffed nails or clear coat nail polish is authorized. Colored nail polish is not authorized for men.

2. FEMALES

- A. HAIR.** Hairstyles and haircuts shall present a professional and balanced appearance. Appropriateness of a hairstyle shall be evaluated by its appearance when headgear is worn. All headgear shall fit snugly and comfortably around the largest part of the head without distortion or excessive gaps. Hairstyles will not interfere with the proper wearing of headgear, protective masks or equipment.
- i. Lopsided and extremely asymmetrical hairstyles are not authorized. Angled hairstyles will have no more than a 1-½ inch difference between the front and the back length of hair. Layered hairstyles are

authorized provided layers present a smooth and graduated appearance.

- ii. Hair length, when in uniform, may touch, but not fall below a horizontal line level with the lower edge of the back of the collar.
- iii. Hair bulk (minus the bun) as measured from the scalp will not exceed 2 inches. The bulk of the bun shall not exceed 3 inches when measured from the scalp and the diameter of the bun will not exceed or extend beyond the width of the back of the head. Loose ends must be tucked in and secured.

B. HAIRSTYLES. Hairstyles shall not detract from a professional appearance in uniform. Styles with shaved portions of the scalp (other than the neckline), those with designs cut, braided, or parted into the hair, as well as dyed using unnatural colors are not authorized. The unique quality and texture of curled, waved and straight hair are recognized. All hairstyles must minimize scalp exposure.

- a. *Ponytails* - A ponytail is a hairstyle in which the hair on the head is pulled away from the face, gathered and secured at the back of the head with an approved accessory. Hair extending beyond the securing accessory may be braided or allowed to extend naturally. The wear of a single braid, French braid, or a single ponytail in Service, Working, and PT uniforms is authorized. Ponytail hairstyles will not interfere with the proper wearing of military headwear and equipment nor extend downward more than three inches below the lower edge of the collar (shirt/blouse, jacket or coat) while sitting, standing or walking. Additionally, ponytails will not extend outward more than three inches behind the head as measured from the securing accessory, nor shall the width exceed the width of the back of the head or be visible from the front.

C. HAIR ACCESSORIES - When hair accessories are worn, they must be consistent with the hair color. A maximum of two small barrettes, similar to hair color, may be used to secure the hair to the head. Bun accessories (used to form the bun), are authorized if completely concealed. Additional hairpins, bobby pins, small rubber bands, or small thin fabric elastic bands may be used to hold hair in place, if necessary. The intent is for pinned-up hair to be styled in a manner that prevents loose ends from extending upward or outward from the head. For example, when using barrettes or hairpins, hair will not extend loosely from the head; when hair is in a bun, all loose ends must be tucked in and secured. Hair accessories shall not present a safety or foreign object damage (FOD) hazard. Hair nets shall not be worn unless authorized for a specific type of duty. Headbands,

scrunchies, combs, claws and butterfly clips, are examples of accessories that are not authorized; this list is not to be considered all inclusive.

I. Fingernails

1. Men - Fingernails shall not extend past fingertips. They shall be kept clean. The tips of the nails may be round to align with the contour of the fingertip. Buffed nails or clear coat nail polish is authorized. Colored nail polish is not authorized for men.
2. Women - Fingernails shall not exceed 1/4 inch measured from the fingertip. They shall be kept clean. The tips of the nails may be round, almond/oval, or square in shape. Nail polish may be worn, but colors shall be conservative and inconspicuous. White, black, red, yellow, orange, green, purple, blue, hot pink, grey, glitter, striped, or any sort of pattern/decorative nail polish are examples of unauthorized nail polish colors. French and American manicures (white and off-white tips with neutral base color ONLY) are authorized.

J. Jewelry - Conservative jewelry is authorized for all personnel and shall be in good taste while in uniform. Eccentricities or faddishness are not permitted. Jewelry shall not present a safety or FOD (Foreign Object Damage) hazard. Jewelry shall be worn within the following guidelines:

1. *Rings* - While in uniform, rings shall be conservative and in good taste. Eccentric or faddish rings are not authorized. Rings may consist of natural metals or fabricated materials (i.e. plastic, wood, silicone) and may be gold, silver, copper, grey, tan, brown, black, white, or light pink in color. Only one ring per hand is authorized, plus a wedding/engagement ring set. Double stacking wedding rings with military academy/educational institution rings is authorized on one hand. Rings shall not present a safety or foreign object damage (FOD) hazard. Rings are not permitted to be worn on the thumb.
2. *Earrings*
 - a) Men - Not authorized while in uniform. Additionally, earrings are not authorized in civilian attire when in a duty status or while in/aboard any ship, craft, aircraft, or in any military vehicle or within any base or other place under military jurisdiction, or while participating in any organized military recreational activities. When considered appropriate by the prescribing authority under article 7201.2, earrings may be prohibited while in foreign countries.

- b) Women - One earring per ear (centered on earlobe) may be worn while in uniform. Earrings shall be 4mm - 6mm ball (approximately 1/8 - 1/4 inch), plain with shiny or brushed matte finish, screw on or with posts. When wearing Working and Service Uniforms, officers and CPOs will wear gold earrings and E6 and below females shall wear silver earrings. When wearing Dress Uniforms White Pearl earrings are optional. White Pearl and Diamond earrings are authorized for optional wear with the Dinner Dress White or Blue Jacket uniform. Synthetic variants of pearl or diamond earrings are acceptable if they meet color and size requirements.
3. *Body Piercing* - Not authorized while in uniform. No articles, other than earrings for women specified above, shall be attached to or through the ear, nose, or any other body part.
4. *Necklaces/Choker* - While in uniform, only one necklace may be worn and it shall not be visible.
5. *Bracelets* - While in uniform, bracelets shall be conservative and in good taste. Eccentric or faddish bracelets are not authorized. Bracelets may consist of natural metals or fabricated materials (i.e., plastic, wood, silicone) and may be gold, silver, copper, grey, tan, brown, black, white, or light pink in color. Only one bracelet may be worn while in uniform. Ankle bracelets in uniform are not authorized. Bracelets shall not present a safety or FOD hazard.
6. *Wristwatch* - While in uniform, wristwatches shall be conservative and in good taste. Eccentric or faddish watches are not authorized. Only one watch and one bracelet may be worn simultaneously (one on each wrist) while in uniform.